

±3.84 ACRES

SWC EISENHAUER & CORINNE, SAN ANTONIO, TEXAS

JAMES GRANT Vice President
james.grant@duwestrealty.com
210.664.4236

DUWEST
CREATING, ENHANCING & PROTECTING VALUE

2520 Broadway St, Suite 200 | San Antonio, Texas 78215
duwestrealty.com

The information contained herein was obtained from sources deemed reliable; however, no guarantees, warranties or representations as to the completeness or accuracy thereof. The presentation of this real estate information is subject to errors; omissions; change of price; prior sale or lease; or withdrawal without notice.

±3.84 ACRES FOR SALE | 3602 Eisenhauer Rd, San Antonio, TX 78218

OVERVIEW

- ±3.84 Acres available at the southwest corner of Eisenhauer Rd & Corinne Dr, between I-35/410 & Austin Hwy
- Property consists of two combined parcels of 3.65 acres and .19 acres
- Frontage on Eisenhauer Rd and on Corinne Dr
- Densely populated area with strong daytime population
- Located just north of Fort Sam Houston
- Easy access to I-35 & Loop 410
- Call for Info & Price

TRAFFIC COUNTS

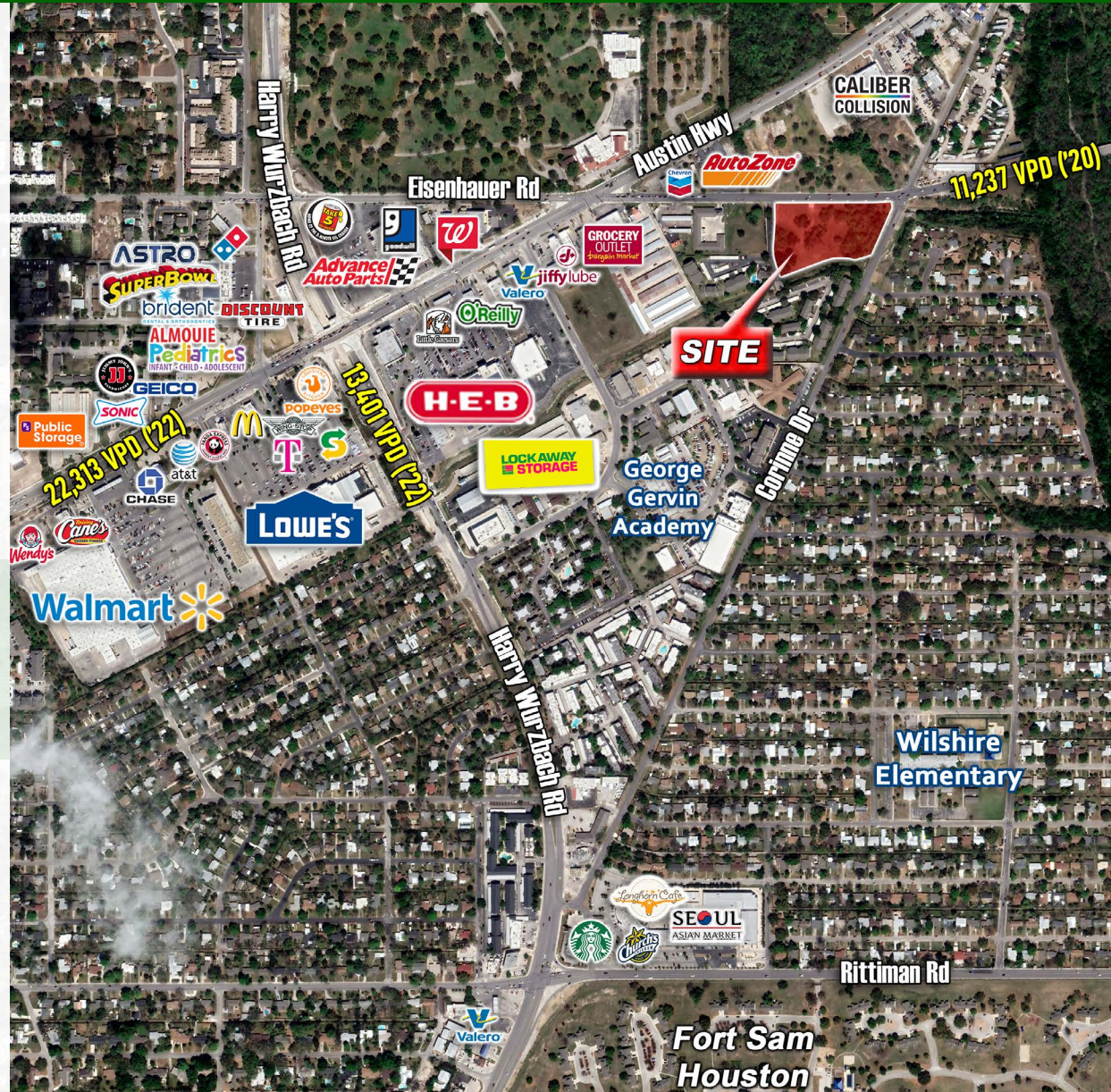
Eisenhauer Rd: 11,237 VPD (TXDOT, 2020)

Harry Wurzbach Rd: 13,401 VPD (TXDOT, 2022)

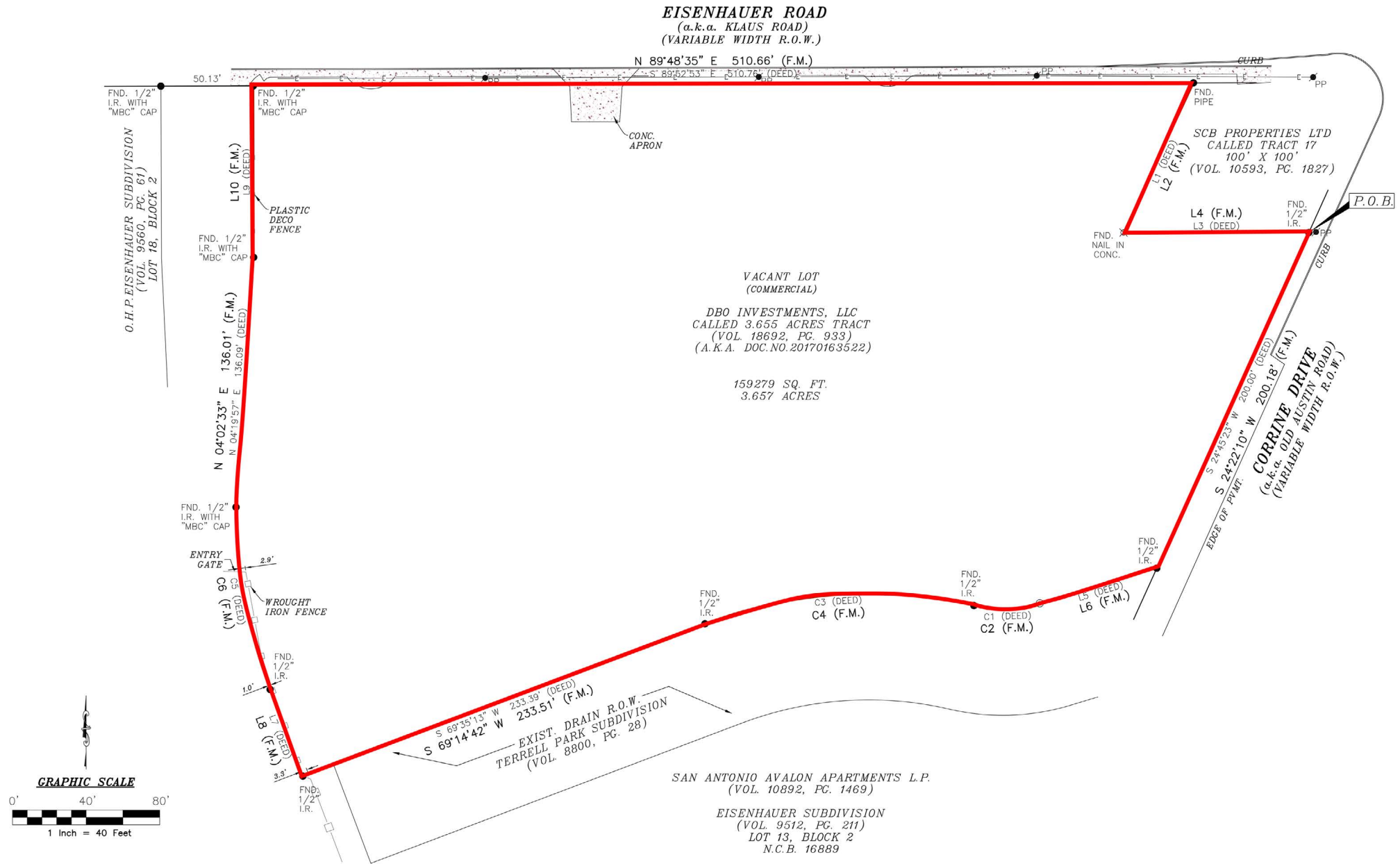
Austin Hwy: 22,313 VPD (TXDOT, 2022)

DEMOGRAPHICS

	1-mile	3-mile	5-mile
2023 Population	13,656	92,604	246,664
2028 Projected Pop.	13,971	91,626	248,428
Daytime Pop.	12,420	130,374	341,153
Avg HH Income	\$89,226	\$102,390	\$90,694



±3.84 ACRES FOR SALE | 3602 Eisenhower Rd, San Antonio, TX 78218



±3.84 ACRES FOR SALE | 3602 Eisenhower Rd, San Antonio, TX 78218

